



CANRICART - LOFTS







## HISTORICAL LEGACY, CONTEMPORARY DESIGN

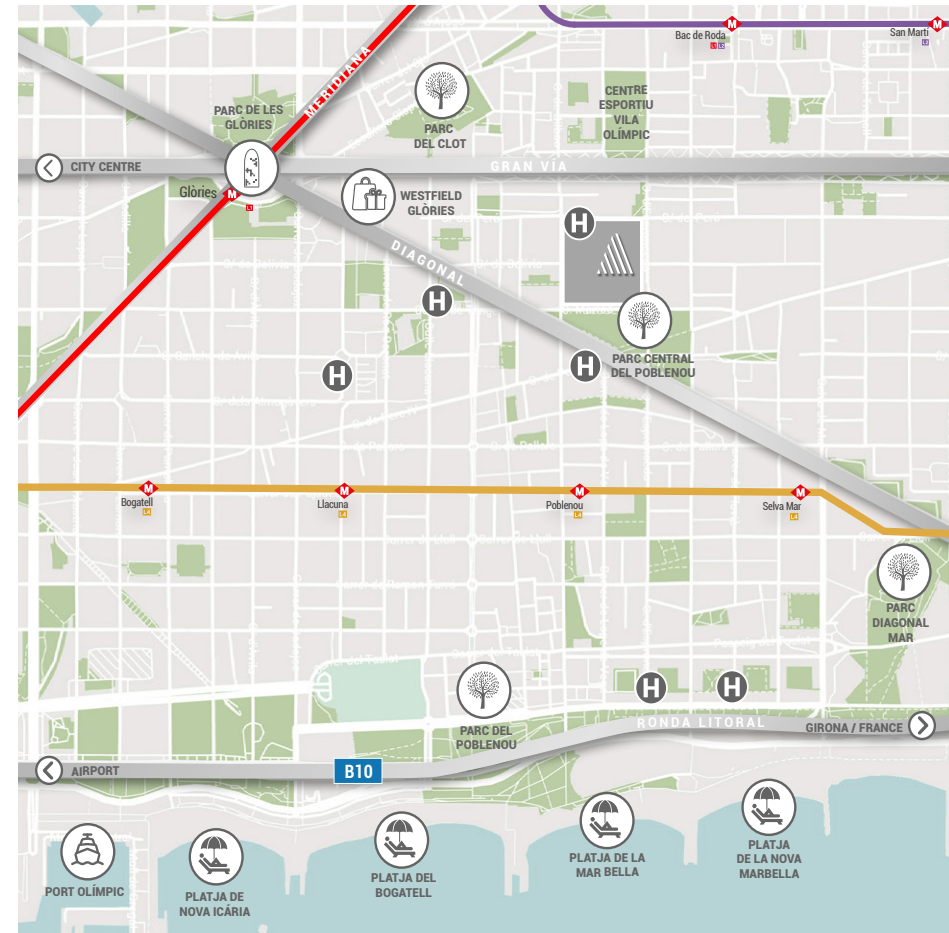
Can Ricart Lofts breathes new life into four emblematic warehouses from Barcelona's 19th century industrial past and transforms them into stunningly beautiful, exquisitely designed and equipped lofts, each with its own unique character.



# POBLENOU & 22@ DISTRICT: PAST AND FUTURE

Barcelona's dynamic 22@ innovation district is a magnet for major tech companies and startups, their talented workforces and digital nomads.

This trendy Poblenou neighbourhood features a fascinating mix of high-tech companies, universities, student residences, hotels, parks and a wide range of leisure and cultural activities. Mar Bella beach is only a 15-minute stroll. It's the lace to work, live and experience the city's vibrant energy.





- 01 - STUDENT RESIDENCE
- 02 - HOTEL
- 03 - PEDESTRIAN SQUARE
- 04 - OFFICES
- 05 - CAMPUS DE LES ARTS (UB)
- 06 - PARC CENTRAL DE POBLENOU

BEACHES

S

N

Av. Diagonal

C. de Espronceda

C. de Perú

## PARC CENTRAL: THE CITY'S BIGGEST PEDESTRIAN AREA

Can Ricart Lofts, adjacent to Parc Central del Poblenou, truly embodies the smart city spirit: spacious, sustainable, creative environments where it's possible to connect with neighbourhood life. An oasis of tranquillity on four pedestrian blocks, where residents enjoy wide open spaces with a mix of restored historic buildings and spectacular contemporary design developments.



# C | LOFTS

The four lofts in **Warehouse C** are located next to the iconic Can Ricart chimney.

A stunning sense of space, interior terraces, private outdoor gardens, skylights in lofts with double-height ceilings and an open mezzanine that's ideal as a study or work area.





RESTORED FAÇADES,  
REINTERPRETED DOORS



SPACES CREATED  
TO BE LIVED IN



# ABUNDANT LIGHT IN CAREFULLY DESIGNED SPACES

Can Ricart Lofts stands out for its combination of original features and an extraordinary recovery of spaces to create a warm, luminous environment.

The original warehouse roofs, openings and skylights have been perfectly replicated. New open-air spaces have been created through open lightwells that lead on to interior terraces, blurring the lines between indoors and out.







PLANS

C I LOFTS





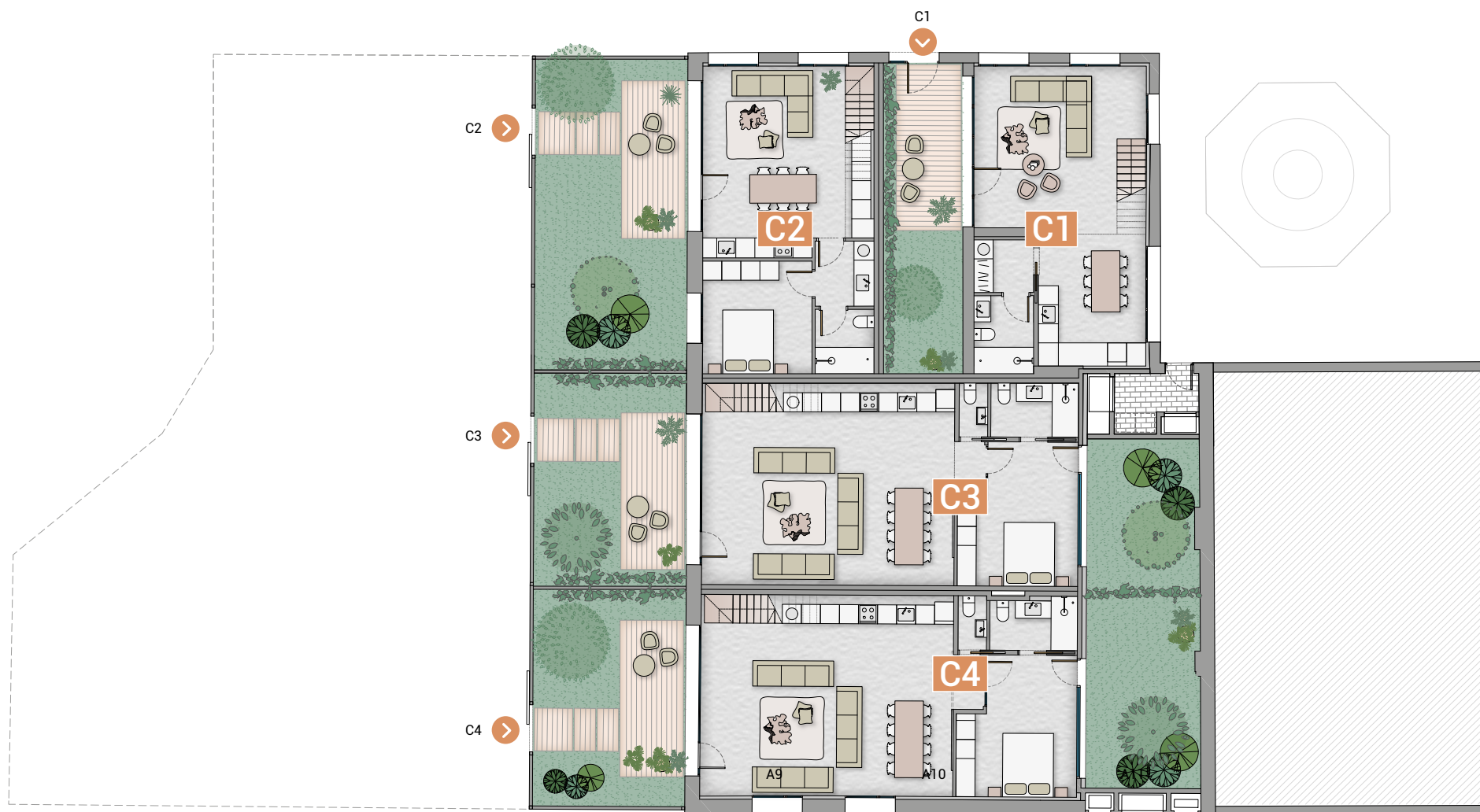
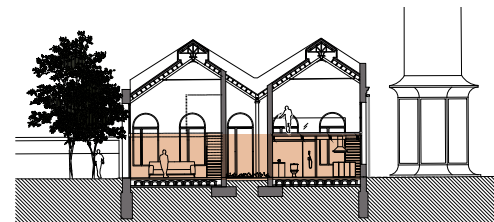
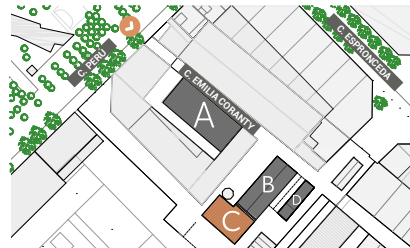
VISTA SECCIÓN  
SECTION VIEW





# C LOFTS

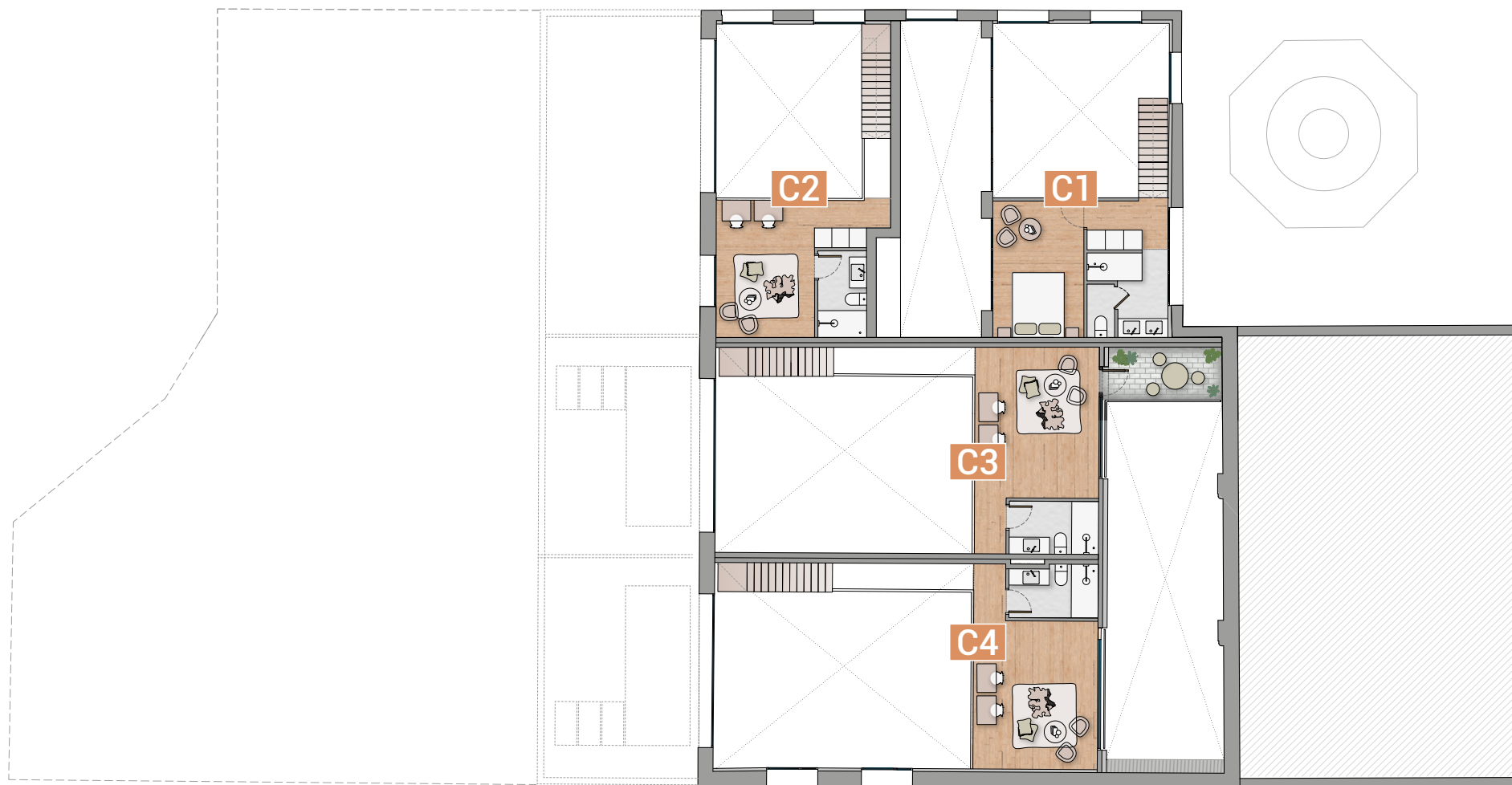
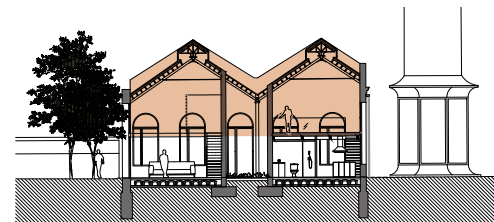
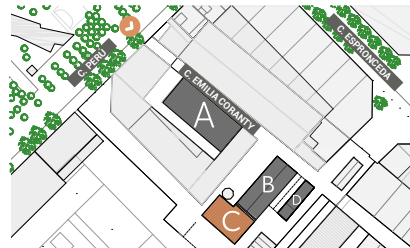
PLANTA BAJA  
GROUND FLOOR





# C I LOFTS

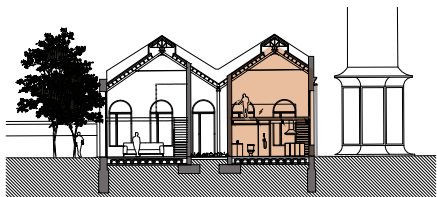
PLANTA PRIMERA  
FIRST FLOOR







# C1 | LOFT



Sup. construida interior / Interior built area

117 m<sup>2</sup>

Total superficie computable /

117 m<sup>2</sup>

Total computable area

Habitaciones / Bedrooms

1

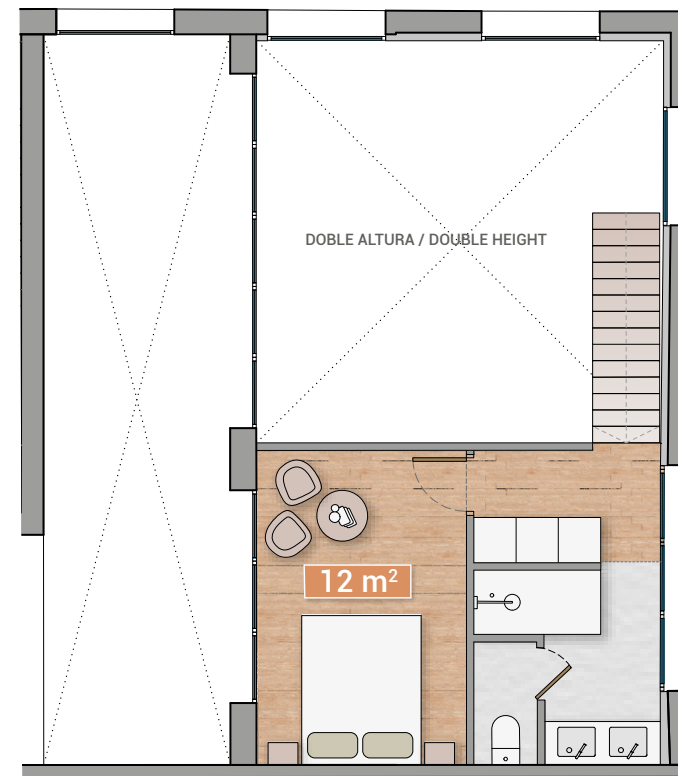
Baños / Bathrooms

2

PLANTA BAJA / GROUND FLOOR



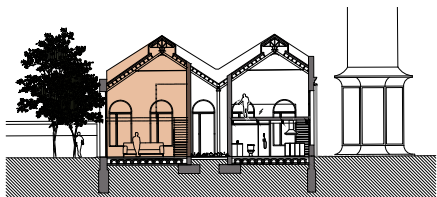
PLANTA PRIMERA / FIRST FLOOR







# C2 | LOFT



Sup. construida interior / Interior built area

**87 m<sup>2</sup>**

Sup. construida exterior / Exterior built area

**51 m<sup>2</sup>**

Total superficie computable /

Total computable area

**113 m<sup>2</sup>**

Habitaciones / Bedrooms

**1**

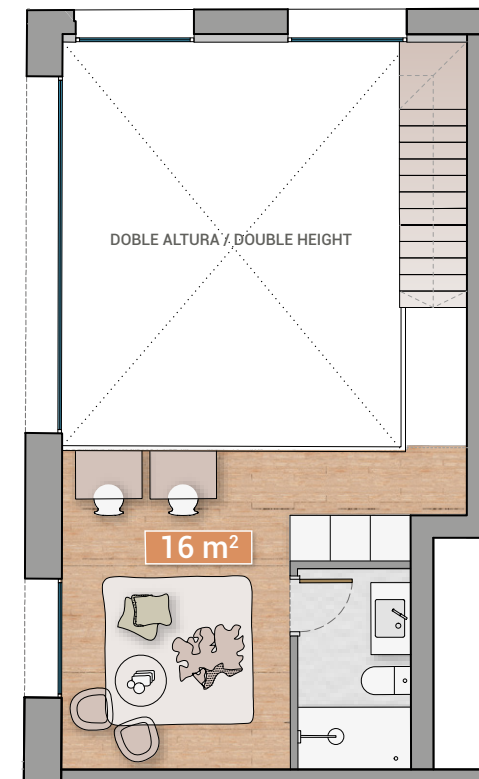
Baños / Bathrooms

**2**

PLANTA BAJA / GROUND FLOOR



PLANTA PRIMERA / FIRST FLOOR



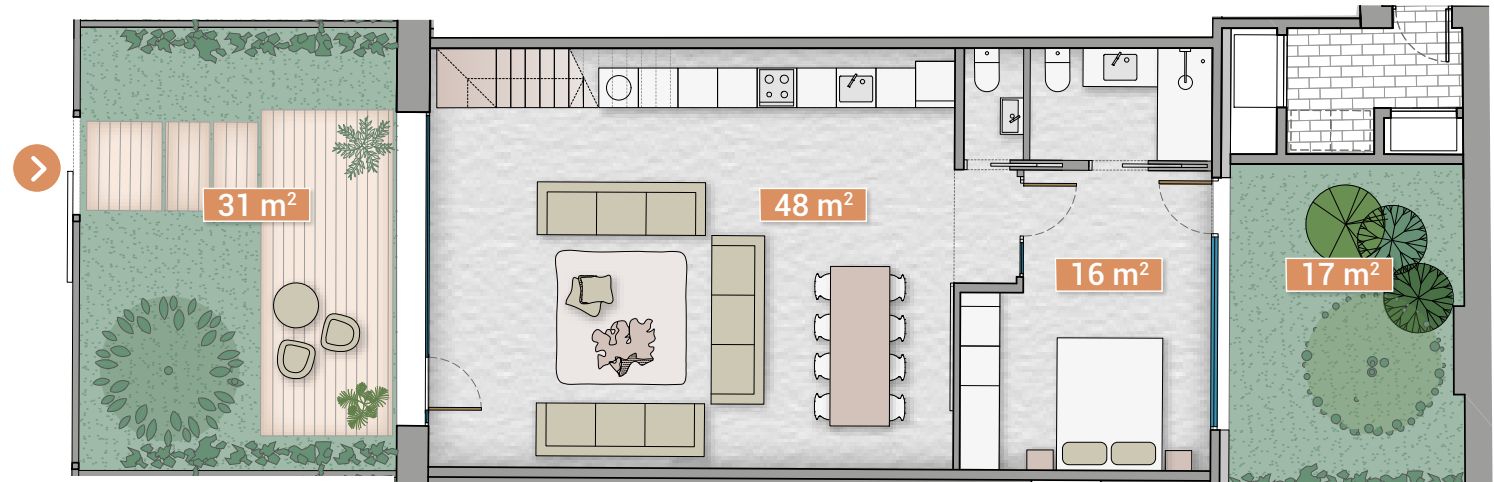


# C3 | LOFT

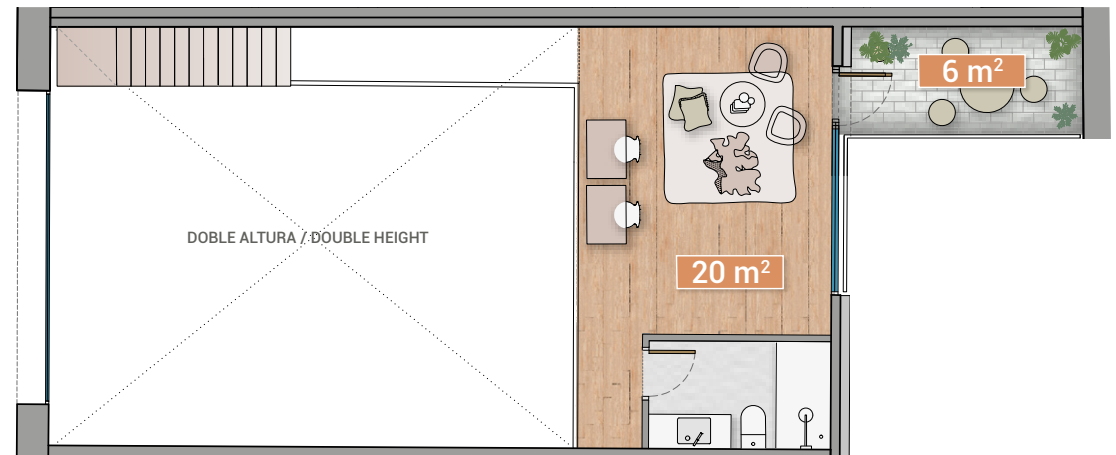


Sup. construida interior / Interior built area	<b>137 m<sup>2</sup></b>
Sup. construida exterior / Exterior built area	<b>31 m<sup>2</sup></b>
Total superficie computable / Total computable area	<b>153 m<sup>2</sup></b>
Habitaciones / Bedrooms	<b>1</b>
Baños / Bathrooms	<b>2</b>

PLANTA BAJA / GROUND FLOOR



PLANTA PRIMERA / FIRST FLOOR



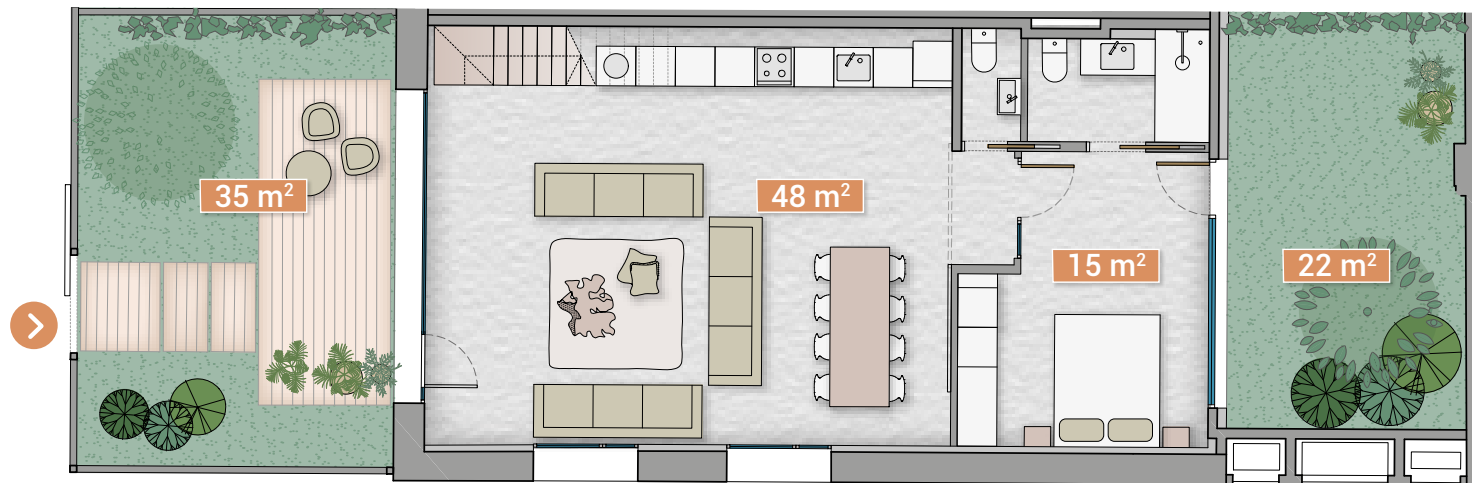


# C4 | LOFT

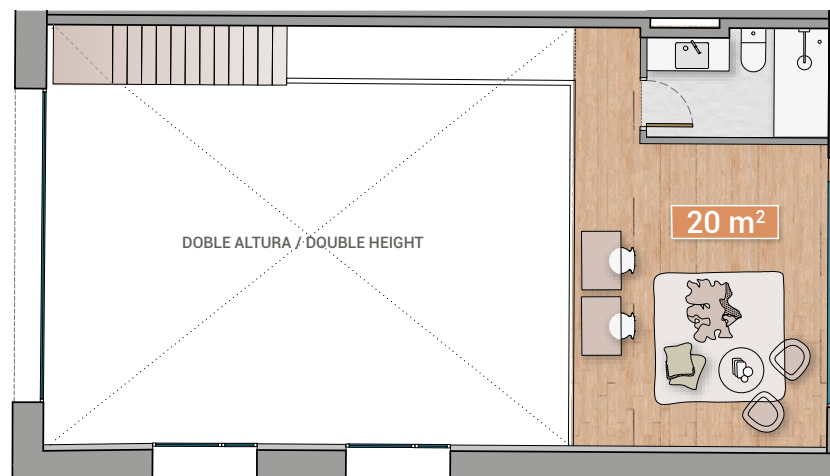


Sup. construida interior / Interior built area	142 m <sup>2</sup>
Sup. construida exterior / Exterior built area	35 m <sup>2</sup>
Total superficie computable / Total computable area	159 m <sup>2</sup>
Habitaciones / Bedrooms	1
Baños / Bathrooms	3

PLANTA BAJA / GROUND FLOOR



PLANTA PRIMERA /  
FIRST FLOOR





For further information:



Gran Via de les Corts Catalanes 643 2º 1ª  
08010 Barcelona

T +34 931 999 945  
bonavista@bonavistadev.com  
[www.bonavistadev.com](http://www.bonavistadev.com)

This document is purely informative and does not form part of any contractual agreement. The images and computer generated images do not necessarily reflect the final architecture and interior design.

