



CANRICART - LOFTS

D I LOFTS



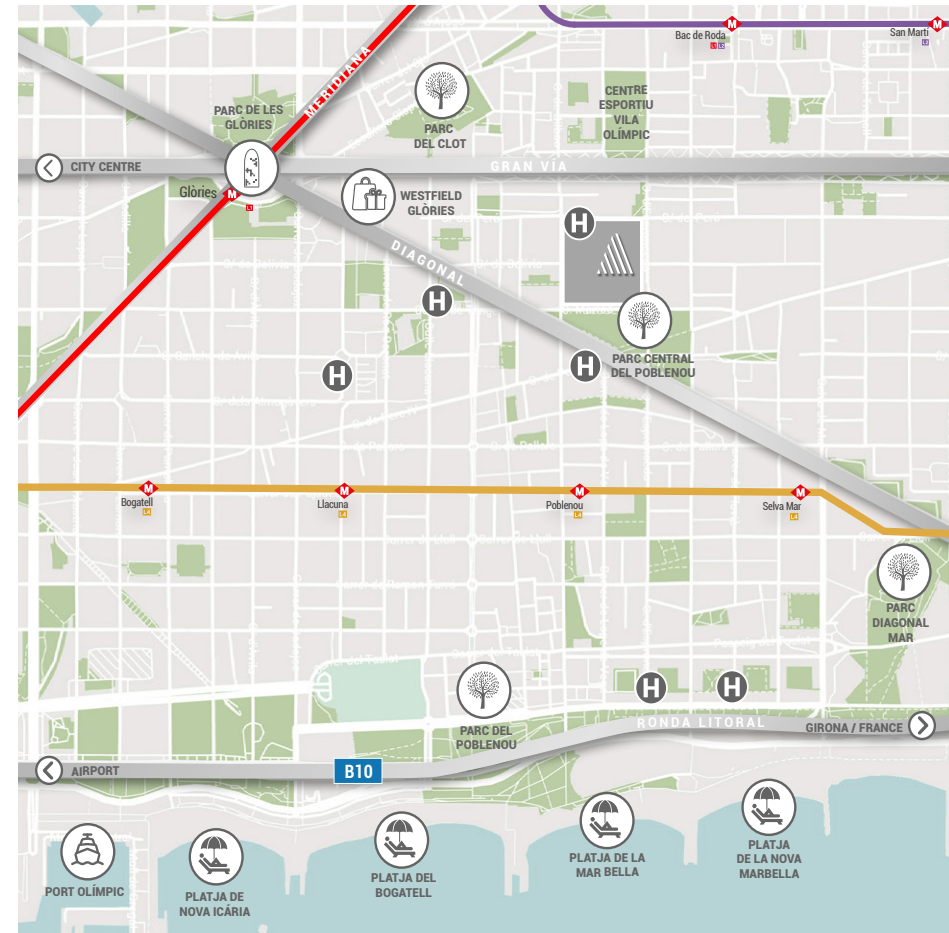
HISTORICAL LEGACY, CONTEMPORARY DESIGN

Can Ricart Lofts breathes new life into four emblematic warehouses from Barcelona's 19th century industrial past and transforms them into stunningly beautiful, exquisitely designed and equipped lofts, each with its own unique character.

POBLENOU & 22@ DISTRICT: PAST AND FUTURE

Barcelona's dynamic 22@ innovation district is a magnet for major tech companies and startups, their talented workforces and digital nomads.

This trendy Poblenou neighbourhood features a fascinating mix of high-tech companies, universities, student residences, hotels, parks and a wide range of leisure and cultural activities. Mar Bella beach is only a 15-minute stroll. It's the lace to work, live and experience the city's vibrant energy.



- 01 - STUDENT RESIDENCE
- 02 - HOTEL
- 03 - PEDESTRIAN SQUARE
- 04 - OFFICES
- 05 - CAMPUS DE LES ARTS (UB)
- 06 - PARC CENTRAL DE POBLENOU

BEACHES

S

N

Av. Diagonal

C. de Espronceda

C. de Perú

PARC CENTRAL: THE CITY'S BIGGEST PEDESTRIAN AREA

Can Ricart Lofts, adjacent to Parc Central del Poblenou, truly embodies the smart city spirit: spacious, sustainable, creative environments where it's possible to connect with neighbourhood life. An oasis of tranquillity on four pedestrian blocks, where residents enjoy wide open spaces with a mix of restored historic buildings and spectacular contemporary design developments.

D | LOFTS

Warehouse D is the building most like New York City lofts because of its very high ceilings, filtered light and large windows along the entire façade.

The building presents two lofts on the ground floor and one loft and a duplex with a large terrace on the second floor.



RESTORED FAÇADES,
REINTERPRETED DOORS

ABUNDANT LIGHT IN CAREFULLY DESIGNED SPACES

Can Ricart Lofts stands out for its combination of original features and an extraordinary recovery of spaces to create a warm, luminous environment.

The original warehouse roofs, openings and skylights have been perfectly replicated.





PLANS

D
I LOFTS

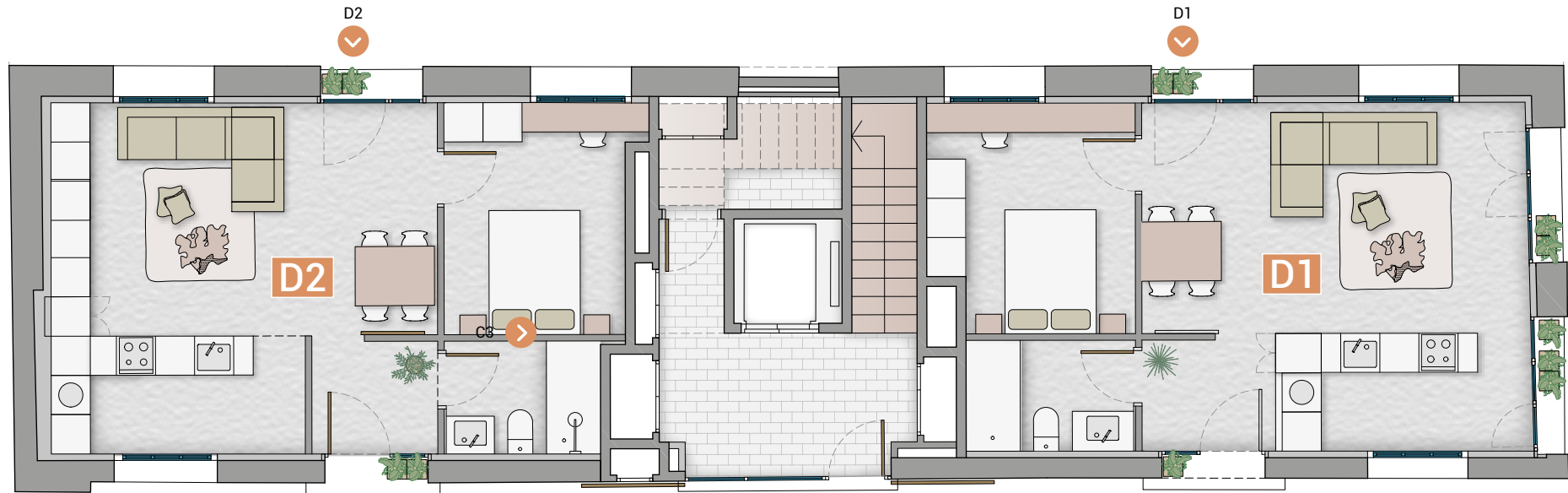
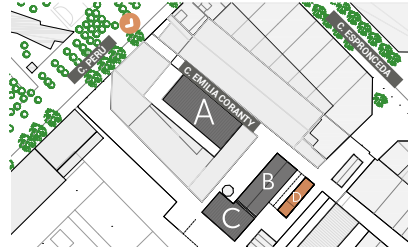
D | LOFTS

VISTA SECCIÓN
SECTION VIEW



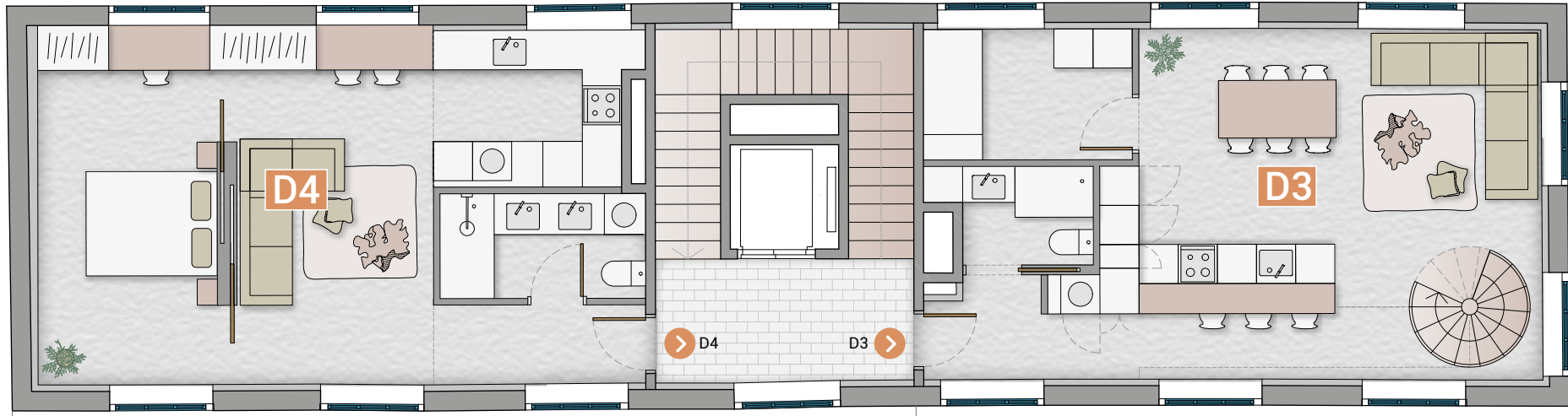
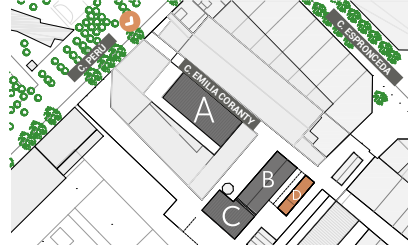
D I LOFTS

PLANTA BAJA
GROUND FLOOR



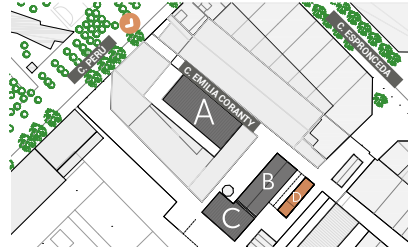
D LOFTS

PLANTA PRIMERA
FIRST FLOOR



D I LOFTS

PLANTA SEGUNDA
SECOND FLOOR





D1 LOFT



Sup. construida interior / Interior built area

62 m²

Total superficie computable /

62 m²

Total computable area

Habitaciones / Bedrooms

1

Baños / Bathrooms

1

PLANTA BAJA / GROUND FLOOR





D2 | LOFT



Sup. construida interior / Interior built area

63 m²

Total superficie computable /

63 m²

Total computable area

Habitaciones / Bedrooms

1

Baños / Bathrooms

1

PLANTA BAJA / GROUND FLOOR



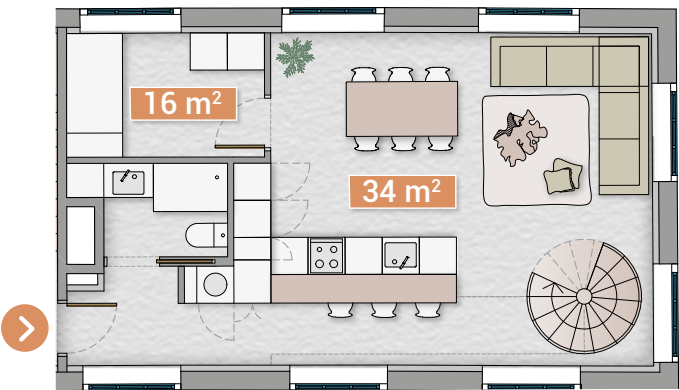


D3 LOFT

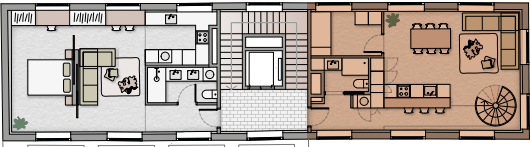
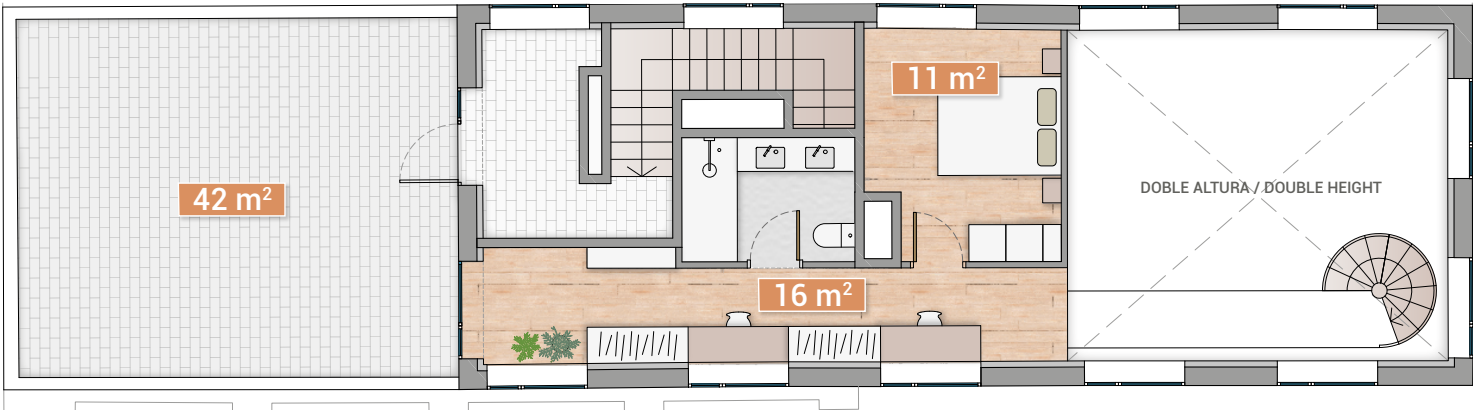


Sup. construida interior / Interior built area	104 m ²
Sup. construida exterior / Exterior built area	23 m ²
Total superficie computable / Total computable area	115 m ²
Habitaciones / Bedrooms	2
Baños / Bathrooms	2

PLANTA PRIMERA / FIRST FLOOR



PLANTA SEGUNDA / SECOND FLOOR





D4 LOFT



PLANTA PRIMERA / FIRST FLOOR



Sup. construida interior / Interior built area	59 m ²
Total superficie computable / Total computable area	59 m ²
Habitaciones / Bedrooms	1
Baños / Bathrooms	1



For further information:



Gran Via de les Corts Catalanes 643 2º 1ª
08010 Barcelona

T +34 931 999 945
bonavista@bonavistadev.com
www.bonavistadev.com

